

FORMING THE FUTURE



THE ENTIRE WORLD OF
FORGING AT A GLANCE

SCHULER 

Member of the ANDRITZ GROUP

THE ENTIRE WORLD OF FORGING. AT A GLANCE.

■ SYSTEMS FOR
COLD FORGING

■ SYSTEMS FOR
WARM FORGING

HYDRAULIC PRESSES



- Hydraulic cold extrusion presses
MH-series, 3,150–40,000 kN
- Hydraulic ironing presses
MHS-series,
2 × 630–2 × 16,000 kN

MECHANICAL PRESSES



- Knuckle-joint presses
MML-series, 3,150–25,000 kN
- Knuckle-joint presses with
ServoDirect Technology
MSL-series, 3,150–25,000 kN

FORMMASTER



- FormMaster
FM-series, 1,000–6,300 kN
- FormMaster with
ServoDirect Technology
FM-series, 1,000–6,300 kN

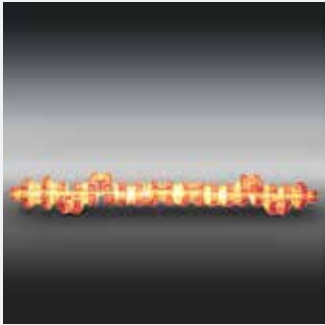
MECHANICAL PRESSES



- Eccentric presses
MME-series, 3,150–20,000 kN
- Eccentric presses with
ServoDirect Technology
MSE-series, 3,150–20,000 kN
- Knuckle-joint presses
MML-series, 3,150–25,000 kN
- Knuckle-joint presses with
ServoDirect Technology
MSL-series, 3,150–25,000 kN

SYSTEMS FOR
HOT FORGING

HAMMERS



- Down stroking hammers
KGH-series, 16–160 kJ
- Linear hammers with Servo
Technology
KGE-series, 16–63 kJ
- Counterblow hammers
HG-series, 160–400 kJ
DG-series, 160–1,400 kJ

SCREW PRESSES



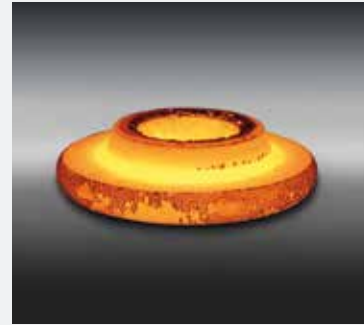
- Screw presses with direct drive
PA-, PAR-series,
3,200–26,000 kN
PSM-, PSH-series,
14,000–80,000 kN
PZS-series,
100,000–360,000 kN

MECHANICAL PRESSES



- Crank presses
PK-series, 12,500–63,000 kN
- Crank presses with ServoDirect
Technology
PK-series, 12,500–31,500 kN
- Crank presses with DualDrive
Technology
PK-series, 12,500–63,000 kN
- Upsetter with ServoDirect
Technology
MSU-series, 3,500–12,500 kN

HYDRAULIC FORGING PRESSES



- Hydraulic forging presses
MH-series, 5,000–150,000 kN

SCHULER SERVICE. STATE-OF-THE-ART SERVICE FOR MORE PERFORMANCE.

OPEN DIE FORGING PRESSES

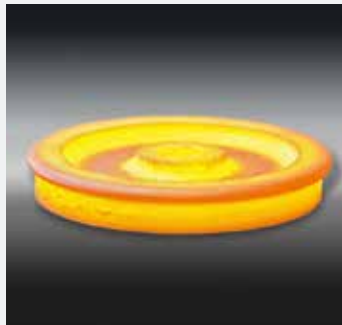


- Hydraulic open die forging presses
MHFT-, MHFU-series, 8 – 150 MN

WHEEL AND RING ROLLER



Design by Schuler



- Wheel roller
MHRV-series, 1,800/800 kN
- Ring roller
MRRH-series,
from 1,000/300 kN



Schuler Service offers a tailored portfolio of services covering the entire life cycle of your equipment. Over 900 service employees worldwide provide expert support 24/7 in close cooperation with you – our partners.

 MORE INFORMATION






[www.schulergroup.com/
service_en](http://www.schulergroup.com/service_en)

PUT IT INTO MOTION. FORGING WITH SCHULER.

SCHULER SYSTEM SOLUTIONS

As a leading supplier of cold, warm and hot forging systems, Schuler offers you a decisive advantage over your competitors for productivity and quality. This overview of extensive products and services provides comprehensive solutions for producing forged products with high part quality, maximum production availability and reliable process engineering. The Schuler team is ready to put it into motion.

Temperature ranges. The different temperature ranges in forging are an important factor when selecting the process and for successful commercial production.

-  Systems for hot forging
-  Systems for warm forging
-  Systems for cold forging

FROM A SINGLE SOURCE

Process and operation development, dies and automation systems. In addition to forging systems and automation technology, Schuler also offers comprehensive process development including die solutions and die change systems from one source. To determine the best economic solution to produce quality parts, development of the forging process begins with part design, and must simultaneously consider material selection, process technology, production stages and die processes.

- Process development
- Feed and transport path analysis
- Die solutions
- Automation systems
- Die change systems

ABOUT THE SCHULER GROUP – WWW.SCHULERGROUP.COM

Schuler is the technological and global market leader in the field of forming technology. The company provides presses, automation solutions, dies, process expertise and service for the entire metalworking industry and for lightweight automobile construction. Its customers include automotive manufacturers and suppliers, as well as companies in the forging, household appliance, packaging, energy and electronics industries. Schuler is a leading supplier of minting presses and implements system solutions for a wide range of different high-tech sectors. The company has a presence in approximately 40 countries with roughly 6 600 employees. Schuler is majority-owned by the Austrian ANDRITZ Group.

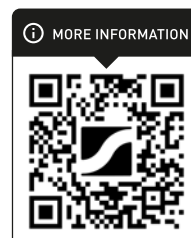
Schuler India Private Limited

Plot No. 9 | Survey No. 31/5/1
Near MITCON Institute of Management
Balewadi | Pune 411045
India
Phone +91 (20) 66802201

Schuler AG

Schuler-Platz 1
73033 Göppingen
Germany
Phone +49 7161 66-307
Fax +49 7161 66-729

info@schulerindia.com
www.schulerindia.com



www.schulergroup.com/
forging

