

FORMING THE FUTURE



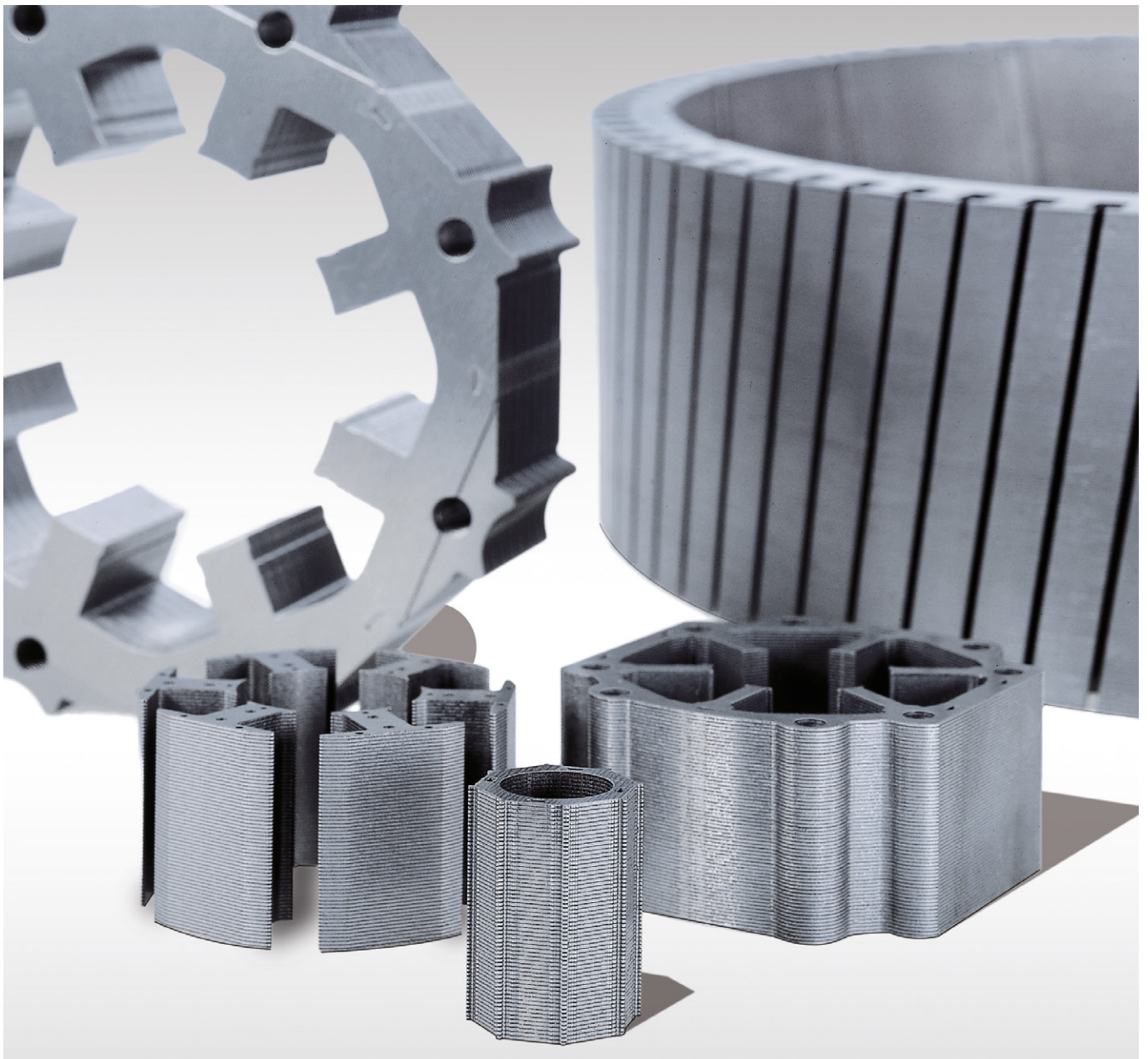
HIGHSPEED BLANKING PRESSES – THE SMARTLINE SERIES

SCHULER 

Member of the ANDRITZ GROUP

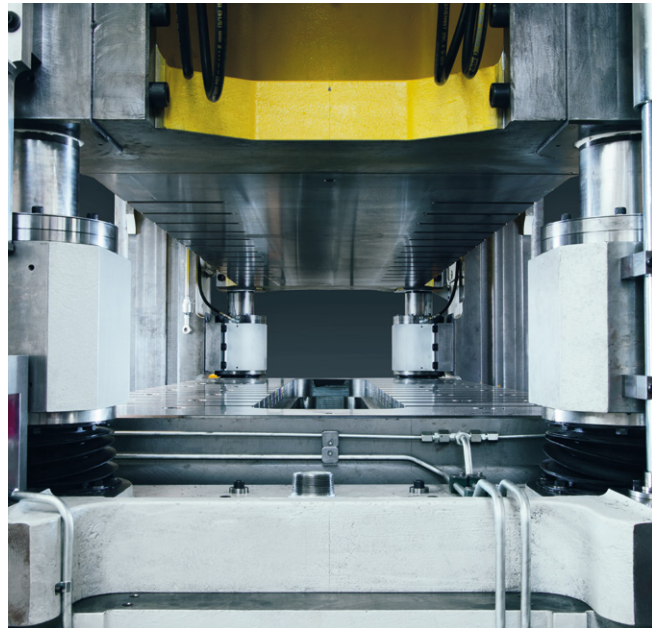
REALIZING WHAT'S REALLY IMPORTANT. THE EQUIPMENT EVOLUTION FOR YOUR SUCCESS.

Mass production of magnetic steel sheets has evolved and advanced into a new dimension with the SMARTLINE series high-speed blanking press. The new production system makes it possible to achieve an economical price/performance ratio.



Everything from a single source – security for your production.

Schuler supplies the complete system with coil line, feed and blank stacker which are linked together by a uniform control and visualization system. These integrated components ensure a consistent high level of availability from your production system so that operation, maintenance, setup and die changes are significantly simplified.



Die space. Depth penetration control and slide guidance guarantee high part quality.

DISCOVER HOW YOU CAN BENEFIT FROM THE SMARTLINE

- The highest component quality and productivity at full press force over the entire stroke range
 - 10 – 30 % higher output due to the new Schuler interlocking control
 - More complex geometries of the magnetic steel sheets are possible due to larger bolster plate lengths up to more than 3,700mm/145.7in
 - Up to 30 % longer die service life and greater process reliability with complex dies, due to the Schuler depth penetration control and play-free slide guiding system
 - Fast die change due to servomotor-driven slide adjustment
 - Solid cast structure for improved dampening
-

Model	SA125S-1.8	SA200S-2.2	SA315S-2.7	EV 3.8
Press force/nominal force [kN/US tons]	1,250/140	2,000/220	3,150/350	3,150/350
Stroke [mm/in]	25/0.984	30/1.181	35/1.378	35/1.378
Max. stripwidth [mm/in]	260/10.2	400/15.7	630/24.8*	630/24.8*
Size of bolsterplate/Width x Length [mm/in]	850 × 1,800/ 33.5 × 70.9	1,200 × 2,200/ 47.2 × 87.7	1,200 × 2,700/ 47.2 × 106.3	1,200 × 3,700/ 47.2 × 145.7
Opening in press bed/Width x Length [mm/in]	450 × 1,550/ 17.7 × 61.0	450 × 1,950/ 17.7 × 76.8	450 × 2,450/ 17.7 × 96.5	450 × 3,450/ 17.7 × 135.8
Size of slideface/Width x Length [mm/in]	600 × 1,800/ 23.6 × 70.9	700 × 2,200/ 27.6 × 87.7	800 × 2,700/ 31.5 × 106.3	800 × 3,700/ 31.5 × 145.7
Opening in uprights [mm/in]	440/17.3	440/17.3	630/24.8	630/24.8
Shut height with slide down, adjustment up and quicklift down [mm/in]	400/15.7	450/17.7	525/20.7	525/20.7
Slide adjustment Quicklift [mm/in]	75/50 2.95/1.97	75/75 2.95/2.95	75/75 2.95/2.95	75/75 2.95/2.95
Max. standard upper die weight without Slideplate [kg/lb]	1,250/2,756	1,875/4,134	3,125/6,889	5,000/11,023
Stroke range [min ⁻¹]	100–600	100–500	100–400	100–250

* 600mm/23.6" with limitation strip lubrication. Subject to technical modifications and amendments to content.

WHEN BUSINESS AS USUAL BECOMES **TOTAL SATISFACTION.**

DISCOVER NOW HOW THE NEW SCHULER SERVICE CAN BENEFIT YOU

Service – Made for you stands for service that is precisely tailored to your needs. Regardless of what type of press or system you work with.

Fast. Competent. Reliable.



**SERVICE
MADE
FOR YOU**





COMPONENTS OF THE SMARTLINE SYSTEM

- | | | |
|--------------------------------|---|---|
| 1. Double decoiler | 4. Feedmax electronic high-performance feed | 6. IIoT press control |
| 2. Fine leveling machine | 5. Smartline high-speed blanking press | 7. Patented depth penetration control during production |
| 3. Strip thickness measurement | | 8. Schuler interlocking control |

ABOUT THE SCHULER GROUP – WWW.SCHULERGROUP.COM

Schuler offers customized cutting-edge technology in all areas of forming – from the networked press to press shop planning. In addition to presses, our products include automation, dies, process know-how and service for the entire metalworking industry. Within the Metris platform by ANDRITZ, Schuler brings together digital solutions for networking forming technology and develops them continuously to further improve line productivity and availability. For battery production in gigafactories, Schuler provides equipment and services in the process steps of cell assembly and formation. Our customers include automotive manufacturers and suppliers, as well as companies in the forging, household appliance and electrical industries. Presses from the Schuler Group mint coins for more than 180 countries. Founded in 1839 at our headquarters in Göppingen, Germany, Schuler has approx. 5,000 employees at production sites in Europe, China and the Americas, as well as service companies in more than 40 countries. The company is part of the international technology group ANDRITZ.

Schuler Pressen GmbH

Schuler-Platz 1

73033 Göppingen

Germany

Phone Sales +49 7161 66-307

Phone Service +49 7161 66-660

Fax +49 7161 66-233

e-mobility@schulergroup.com

www.schulergroup.com



www.schulergroup.com/smartline

