

FORMING THE FUTURE

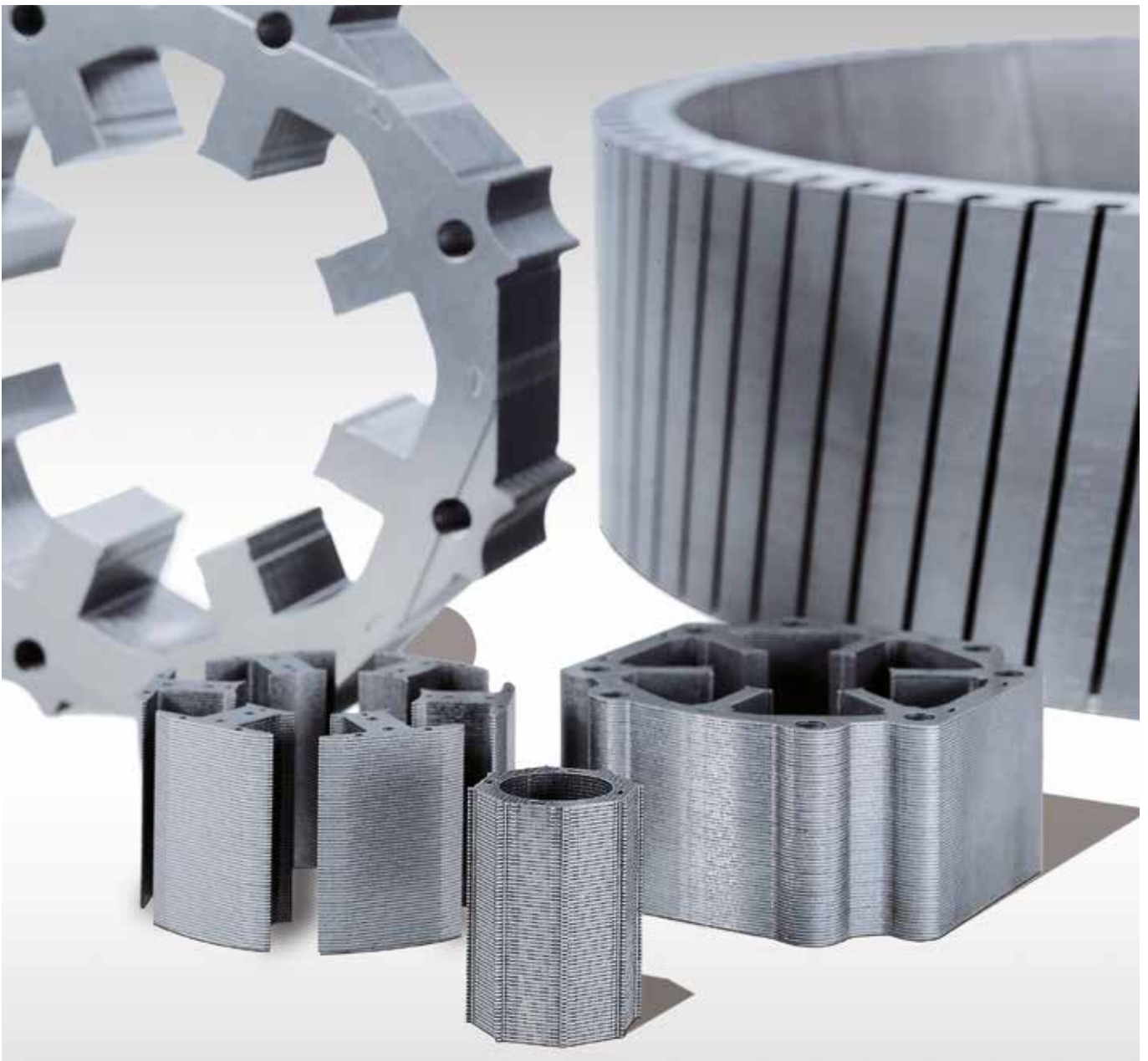


## HIGHSPEED BLANKING PRESSES – THE SMARTLINE SERIES

# REALIZING WHAT'S REALLY IMPORTANT. THE EQUIPMENT EVOLUTION FOR YOUR SUCCESS.

Mass production of magnetic steel sheets has evolved and advanced into a new dimension with the SMARTLINE series high-speed blanking press. The new production system makes it possible to achieve an economical price/performance ratio.

---



Everything from a single source – security for your production.

Schuler supplies the complete system with coil line, feed and blank stacker which are linked together by a uniform control and visualization system. These integrated components ensure a consistent high level of availability from your production system so that operation, maintenance, setup and die changes are significantly simplified.



Die space. Depth penetration control and slide guidance guarantee high part quality.

DISCOVER HOW YOU CAN BENEFIT FROM THE SMARTLINE

---

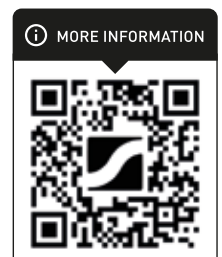
- The highest component quality and productivity at full press force over the entire stroke range
  - 10 – 30 % higher output due to the new Schuler interlocking control
  - More complex geometries of the magnetic steel sheets are possible due to larger bolster plate lengths up to more than 3,700mm / 145.7 in
  - Up to 30 % longer die service life and greater process reliability with complex dies, due to the Schuler depth penetration control and play-free slide guiding system
  - Fast die change due to servomotor-driven slide adjustment
  - Solid cast structure for improved dampening
-

Model	SA125S-1.8	SA200S-2.2	SA315S-2.7	EV 3.8
Press force/nominal force [kN/US tons]	1,250/140	2,000/220	3,150/350	3,150/350
Stroke [mm/in]	25/0.984	30/1.181	35/1.378	35/1.378
Max. stripwidth [mm/in]	260/10.2	400/15.7	630/24.8*	630/24.8*
Size of bolsterplate/Width x Length [mm/in]	850 × 1,800/ 33.5 × 70.9	1,200 × 2,200/ 47.2 × 87.7	1,200 × 2,700/ 47.2 × 106.3	1,200 × 3,700/ 47.2 × 145.7
Opening in press bed/Width x Length [mm/in]	450 × 1,550/ 17.7 × 61.0	450 × 1,950/ 17.7 × 76.8	450 × 2,450/ 17.7 × 96.5	450 × 3,450/ 17.7 × 135.8
Size of slideface/Width x Length [mm/in]	600 × 1,800/ 23.6 × 70.9	700 × 2,200/ 27.6 × 87.7	800 × 2,700/ 31.5 × 106.3	800 × 3,700/ 31.5 × 145.7
Opening in uprights [mm/in]	440/17.3	440/17.3	630/24.8	630/24.8
Shut height with slide down, adjustment up and quicklift down [mm/in]	400/15.7	450/17.7	525/20.7	525/20.7
Slide adjustment   Quicklift [mm/in]	75/50   2.95/1.97	75/75   2.95/2.95	75/75   2.95/2.95	75/75   2.95/2.95
Max. standard upper die weight without Slideplate [kg/lb]	1,250/2,756	1,875/4,134	3,125/6,889	5,000/11,023
Stroke range [min <sup>-1</sup> ]	100–600	100–500	100–400	100–250

\* 600mm/23.6" with limitation strip lubrication. Subject to technical modifications and amendments to content.

## SCHULER SERVICE – STATE-OF-THE-ART SERVICE FOR MORE PERFORMANCE

Schuler Service offers a tailored portfolio of services covering the entire life cycle of your equipment. Over 900 service employees worldwide provide expert support 24/7 in close cooperation with you – our partners. Our main priority is always to ensure the maximum productivity and safety of your production equipment in order to secure your company's continued success.



[www.schulergroup.com/  
service\\_en](http://www.schulergroup.com/service_en)



## COMPONENTS OF THE SMARTLINE SYSTEM

- |                                |   |   |
|--------------------------------|---|---|
| 1. Double decoiler             | 4. Feedmax electronic high-performance feed | 6. IIoT press control                                   |
| 2. Fine leveling machine       | 5. Smartline high-speed blanking press      | 7. Patented depth penetration control during production |
| 3. Strip thickness measurement |   | 8. Schuler interlocking control                         |

**ABOUT THE SCHULER GROUP – WWW.SCHULERGROUP.COM**

Schuler is the technological and global market leader in the field of forming technology. The company provides presses, automation solutions, dies, process expertise and service for the entire metalworking industry and for lightweight automobile construction. Its customers include automotive manufacturers and suppliers, as well as companies in the forging, household appliance, packaging, energy and electronics industries. Schuler is a leading supplier of minting presses and implements system solutions for a wide range of different high-tech sectors. The company has a presence in approximately 40 countries with roughly 6 600 employees. Schuler is majority-owned by the Austrian ANDRITZ Group.

**Schuler Pressen GmbH**

Schuler-Platz 1

73033 Göppingen

Germany

Phone Sales +49 7161 66-866

Phone Service +49 7161 66-660

Fax +49 7161 66-233

[drives.generators@schulergroup.com](mailto:drives.generators@schulergroup.com)

[www.schulergroup.com](http://www.schulergroup.com)



[www.schulergroup.com/  
youtube](http://www.schulergroup.com/youtube)

