

FORMING THE FUTURE



## SYSTEM SOLUTIONS FOR FORGING

---

# PUT IT INTO MOTION. FORGING WITH SCHULER.

■ SYSTEMS FOR  
COLD FORGING

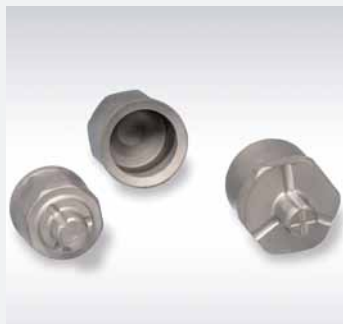
■ SYSTEMS FOR  
WARM FORGING

## HYDRAULIC PRESSES



- Hydraulic cold extrusion presses  
MH-series, 3,150 – 40,000 kN
- Hydraulic ironing presses  
MHS-series,  
2 × 630 – 2 × 16,000 kN

## MECHANICAL PRESSES



- Knuckle-joint presses  
MML-series, 3,150 – 25,000 kN
- Knuckle-joint presses with  
ServoDirect Technology  
MSL-series, 3,150 – 25,000 kN

## FORMMASTER



- FormMaster  
Typ FM, 1.000 – 6.300 kN
- FormMaster mit ServoDirekt  
Technologie  
Typ FM, 1.000 – 6.300 kN

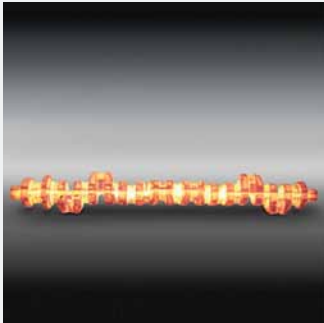
## MECHANICAL PRESSES



- Eccentric presses  
MME-series,  
3,150 – 20,000 kN
- Eccentric presses with  
ServoDirect Technology  
MSE-series,  
3,150 – 20,000 kN
- Knuckle-joint presses  
MML-series,  
3,150 – 25,000 kN
- Knuckle-joint presses with  
ServoDirect Technology  
MSL-series,  
3,150 – 25,000 kN

SYSTEMS FOR  
HOT FORGING

### HAMMERS



- Down stroking hammers  
KGH-series, 16–160 kJ
- Linear hammers with Servo  
Technology  
KGE-series, 16–63 kJ
- Counterblow hammers  
HG-series, 160–400 kJ  
DG-series, 160–1,400 kJ

### SCREW PRESSES



- Screw presses with direct drive  
PA-, PAR-series,  
3,200–26,000 kN  
PSM-, PSH-series,  
14,000–80,000 kN  
PZS-series,  
100,000–360,000 kN

### MECHANICAL PRESSES



- Crank presses  
PK-series, 12,500–63,000 kN
- Crank presses with ServoDirect  
Technology  
PK-series, 12,500–31,500 kN
- Crank presses with DualDrive  
Technology  
PK-series, 12,500–63,000 kN
- Upsetter with ServoDirect  
Technology  
MSU-series, 3,500–12,500 kN

### HYDRAULIC FORGING PRESSES



- Hydraulic forging presses  
MH-series, 5,000–150,000 kN



## SCHULER SERVICE. STATE-OF-THE-ART SERVICE FOR MORE PERFORMANCE.

### OPEN DIE FORGING PRESSES



- Hydraulic open die forging presses  
MHFT-, MHFU-series, 8 – 150 MN

### WHEEL AND RING ROLLER



- Wheel roller  
MHRV-series, 1,800/800 kN
- Ring roller  
MHRH-series,  
from 1,000/300 kN



Schuler Service offers a tailored portfolio of services covering the entire life cycle of your equipment. Over 900 service employees worldwide provide expert support 24/7 in close cooperation with you – our partners.

**Find out more.** Simply scan the QR code with the camera of your smartphone or tablet.

[www.schulerpresse.co.uk](http://www.schulerpresse.co.uk)






# PUT IT INTO MOTION. FORGING WITH SCHULER.

---

## SCHULER SYSTEM SOLUTIONS

As a leading supplier of cold, warm and hot forging systems, Schuler offers you a decisive advantage over your competitors for productivity and quality. This overview of extensive products and services provides comprehensive solutions for producing forged products with high part quality, maximum production availability and reliable process engineering. The Schuler team is ready to put it into motion.

**Temperature ranges.** The different temperature ranges in forging are an important factor when selecting the process and for successful commercial production.

-  Systems for hot forging
-  Systems for warm forging
-  Systems for cold forging

## FROM A SINGLE SOURCE

**Process and operation development, dies and automation systems.** In addition to forging systems and automation technology, Schuler also offers comprehensive process development including die solutions and die change systems from one source. To determine the best economic solution to produce quality parts, development of the forging process begins with part design, and must simultaneously consider material selection, process technology, production stages and die processes.

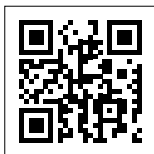
- Process development
- Feed and transport path analysis
- Die solutions
- Automation systems
- Die change systems

---

## SCHULER WORLDWIDE

As the technological and global market leader in metal and plastic forming equipment, Schuler offers cutting edge presses, automation, dies, process know-how and services for the entire metal forming industry and lightweight vehicle construction. Its clients include car manufacturers and their suppliers, as well as companies in the forging, household equipment, packaging, energy and electrical industries. Schuler is the market leader in coin minting technology and supplies systems solutions for the aerospace, railway and large pipes industries. With 5,500 employees, Schuler is represented in 40 nations around the world. The Austrian ANDRITZ Group holds a majority share in Schuler.

---



[www.schulergroup.com/forging](http://www.schulergroup.com/forging)

For more information, simply scan the QR code  
with the camera of your smartphone or tablet.

**Schuler Presses UK Limited**

Brineton Street | Quayside Drive

Walsall, West Midlands

WS2 9LA | United Kingdom

Phone +44 1922 619-100

Fax +44 1922 619-101

[forging@schulergroup.com](mailto:forging@schulergroup.com)

[www.schulergroup.com/forging](http://www.schulergroup.com/forging)

**Schuler AG**

Bahnhofstraße 41

73033 Göppingen | Germany

Phone +49 7161 66-307

Fax +49 7161 66-729