

FORMING THE FUTURE



THE ENTIRE WORLD OF  
FORGING AT A GLANCE

---

**SCHULER** 

Member of the ANDRITZ GROUP

# FORGING BY SCHULER – TURNKEY SOLUTIONS FROM A SINGLE SOURCE.

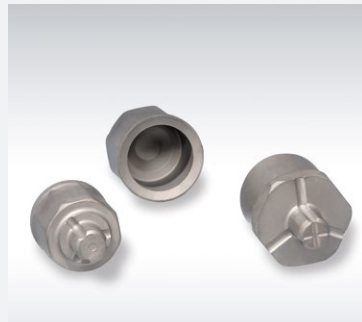
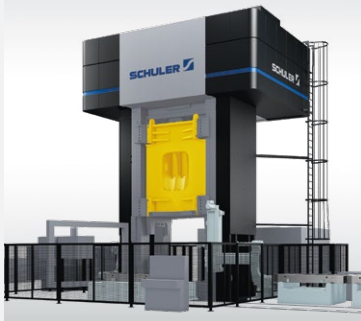
■ SYSTEMS FOR  
COLD FORGING

■ SYSTEMS FOR  
WARM FORGING

## HYDRAULIC PRESSES

## MECHANICAL PRESSES

## MECHANICAL PRESSES



- Hydraulic cold extrusion presses  
MH-series, 3,150 – 40,000 kN

- Hydraulic ironing presses  
MHS-series,  
2 × 630 – 2 × 16,000 kN

- Knuckle-joint presses  
MML-series, 3,150 – 25,000 kN

- Knuckle-joint presses with  
ServoDirect Technology  
MSL-series, 3,150 – 25,000 kN

- Eccentric presses  
MME-series, 3,150 – 20,000 kN

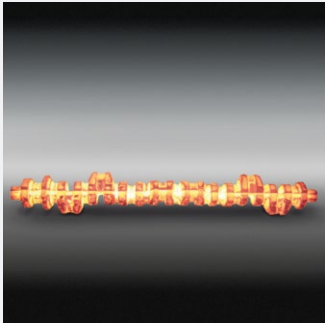
- Eccentric presses with  
ServoDirect Technology  
MSE-series, 3,150 – 20,000 kN

- Knuckle-joint presses  
MML-series, 3,150 – 25,000 kN

- Knuckle-joint presses with  
ServoDirect Technology  
MSL-series, 3,150 – 25,000 kN

SYSTEMS FOR  
HOT FORGING

HAMMERS



- Down stroking hammers  
KGH-series, 16–160 kJ
- Linear hammers with Servo  
Technology  
KGE-series, 16–63 kJ
- Counterblow hammers  
HG-series, 160 – 400 kJ  
DG-series, 160 – 1,400 kJ

SCREW PRESSES



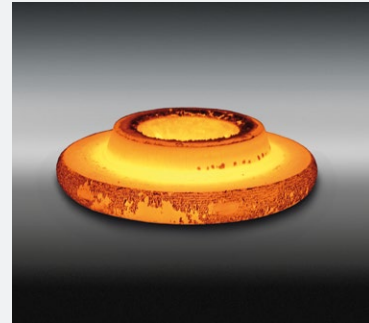
- Screw presses with direct drive  
PA-, PAR-series, 3,200 – 26,000 kN  
PSM-, PSH-series, 14,000 – 80,000 kN  
PZS-series, 100,000 – 360,000 kN

MECHANICAL PRESSES



- Crank presses  
PK-series, 12,500 – 63,000 kN
- Crank presses with ServoDirect  
Technology  
PK-series, 12,500 – 31,500 kN
- Crank presses with DualDrive  
Technology  
PK-series, 12,500 – 63,000 kN
- Upsetter with ServoDirect  
Technology  
MSU-series, 3,500 – 12,500 kN

HYDRAULIC FORGING PRESSES



- Hydraulic forging presses  
MH-series, 5,000 – 150,000 kN

### OPEN DIE FORGING PRESSES



- Hydraulic open die forging presses  
MHFT-, MHFU-series, 8 – 150 MN

### WHEEL AND RING ROLLERS



- Wheel roller  
MHRV-series, 1,800/800 kN
- Ring roller  
MHRH-series, from 1,000/800 kN

### FARINA MECHANICAL PRESSES



- Type GLF and GLK  
7,500 – 160,000 kN





# PUT IT INTO MOTION. FORGING WITH SCHULER.

## SCHULER SYSTEM SOLUTIONS

As a leading supplier of cold, warm and hot forging systems, Schuler offers you a decisive advantage over your competitors for productivity and quality. This overview of extensive products and services provides comprehensive solutions for producing forged products with high part quality, maximum production availability and reliable process engineering. The Schuler team is ready to put it into motion.

**Temperature ranges.** The different temperature ranges in forging are an important factor when selecting the process and for successful commercial production.

- Systems for hot forging
- Systems for warm forging
- Systems for cold forging

## FROM A SINGLE SOURCE

**Process and operation development, dies and automation systems.** In addition to forging systems and automation technology, Schuler also offers comprehensive process development including die solutions and die change systems from one source. To determine the best economic solution to produce quality parts, development of the forging process begins with part design, and must simultaneously consider material selection, process technology, production stages and die processes.

- Process development
- Feed and transport path analysis
- Die solutions
- Automation systems
- Die change systems

## LIFECYCLE SERVICE FROM SCHULER. EXTENSIVE INDUSTRY SERVICES FOR FORMING TECHNOLOGY.

From the dependable supply of spare parts and rapid assistance in the event of malfunctions to the digital transformation process: products and services from Schuler Service help you to keep your system running at an optimal level. Whether it's spare parts service, maintenance work, modernisations, used presses, IT solutions, or our 24/7 support with quick response times: you can count on our Service Team to ensure maximum safety and system availability in your press shop – whenever you need us, even on our 24/7 Hotline.



[www.schulergroup.com/  
service\\_en](http://www.schulergroup.com/service_en)

## ABOUT THE SCHULER GROUP – WWW.SCHULERGROUP.COM

Schuler offers customized cutting-edge technology in all areas of forming – from the networked press to press shop planning. In addition to presses, our products include automation, dies, process know-how and service for the entire metalworking industry. Schuler's Digital Suite brings together solutions for networking forming technology and is continuously being developed to further improve line productivity and availability. Our customers include automotive manufacturers and suppliers, as well as companies in the forging, household appliance and electrical industries. Presses from the Schuler Group mint coins for more than 180 countries. Founded in 1839 at our headquarters in Göppingen, Germany, Schuler has approx. 5,000 employees at production sites in Europe, China and the Americas, as well as service companies in more than 40 countries. The company is part of the international technology group ANDRITZ.

### Service center forging hammers

#### Schuler Pressen GmbH

Wetzlarer Straße 1  
57250 Netphen-Werthenbach  
Germany  
Phone +49 2737 962-300

### Mechanical presses for cold, warm and hot forging

#### Schuler Pressen GmbH

Schussenstraße 11  
88250 Weingarten  
Germany  
Phone Sales +49 751 401-2214

### Hydraulic presses for cold, warm and hot forging

#### Schuler Pressen GmbH

Louis-Schuler-Straße 9  
75050 Gemmingen  
Germany  
Phone + 49 7267 809-0

Phone Service +49 7161 66-628  
forging@schulergroup.com  
www.schulergroup.com/forging



www.schulergroup.com/  
forging

