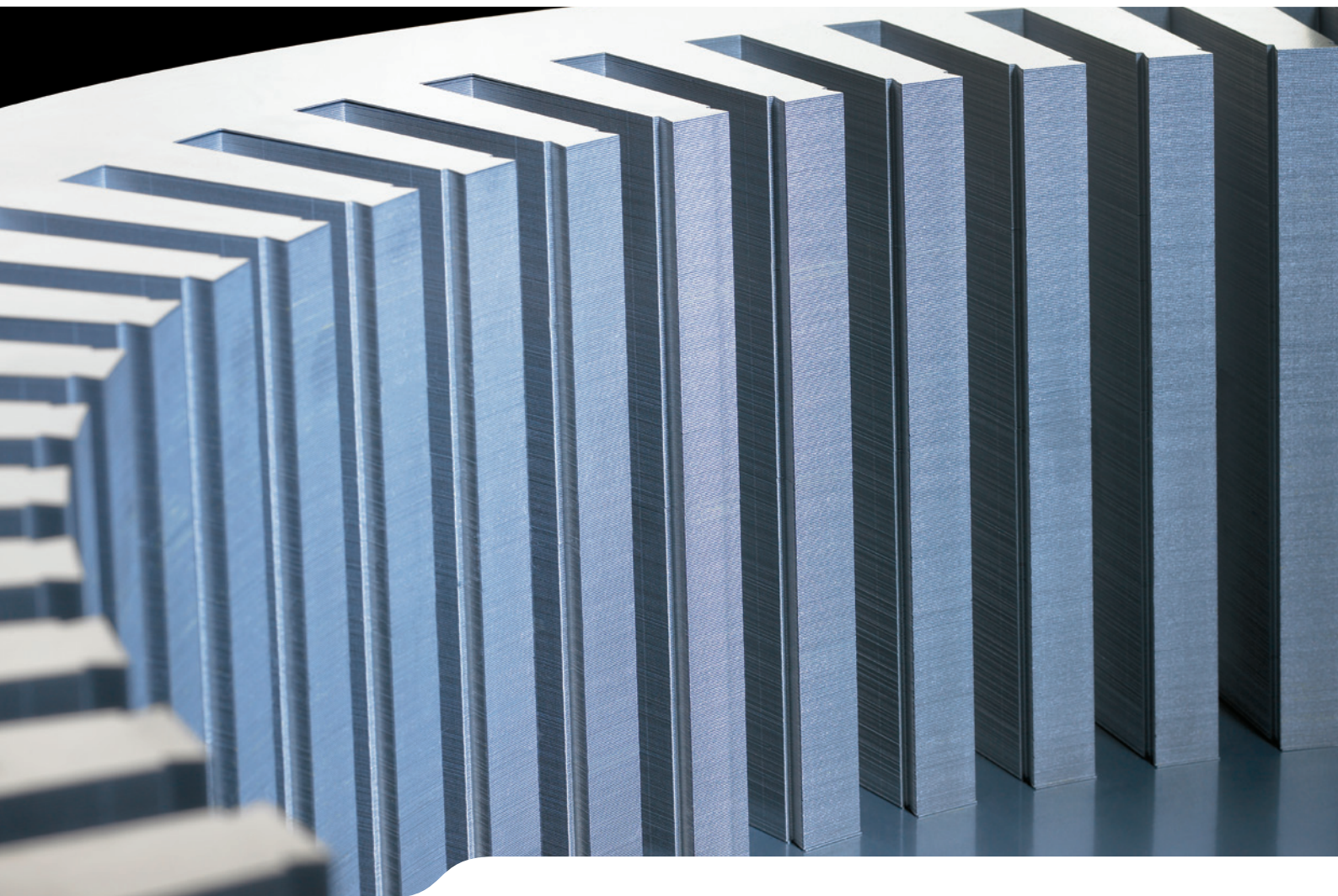


FORMING THE FUTURE



SYSTEMS FOR THE MANUFACTURE
OF ELECTRIC MOTOR LAMINATIONS

SCHULER 

Member of the ANDRITZ GROUP

ECONOMIC PRODUCTION.
THE WHOLE RANGE FOR CUTTING CIRCULAR
BLANKS AND STATORS.



Variety of electric motor laminations, made on Schuler equipment.

LINES

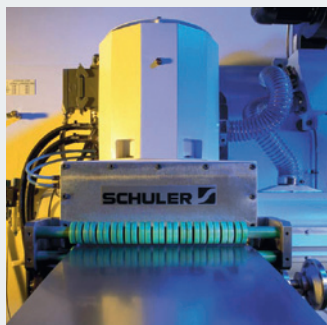
HIGHSPEED BLANKING LINES



- **Smartline SA** with a press force of 1,250 kN to 5,000 kN
- **Bed clamping plate** from 850 mm × 1,800 mm to 1,450 mm × 3,300 mm
- **Stroking range** from 80 – 1,000 min⁻¹

AUTOMATION

FEEDERS



- **Servo feed:**
Feedmax 260 / 400 / 630

PART HANDLING



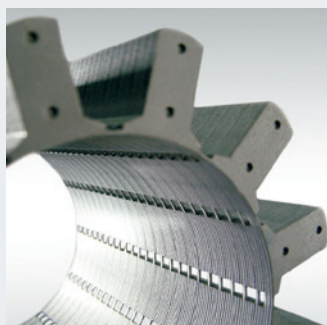
- **Stacking device**
- **Punch-bundling control**
- **Press force monitors**



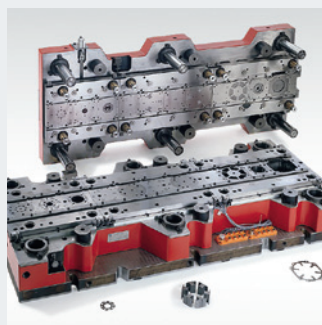
- **Depth penetration control**

DIES / APPLICATIONS

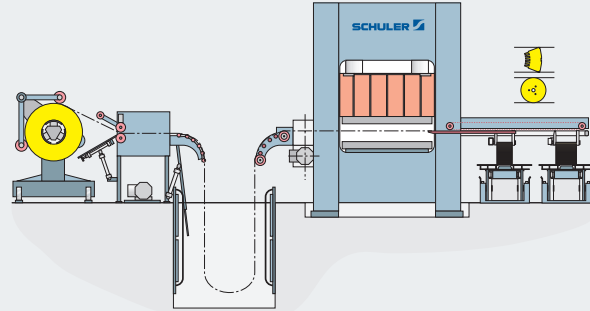
PROGRESSIVE DIES



SEGMENTMASTER SYSTEM

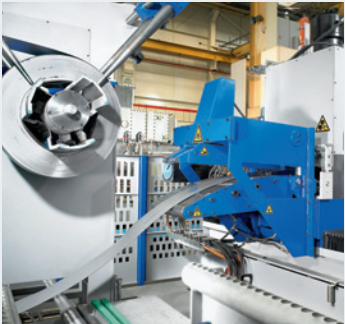


COMPOUND BLANKING LINES



- Electric motor lamination blanking line
with a press force of 2,500 kN to 6,300 kN

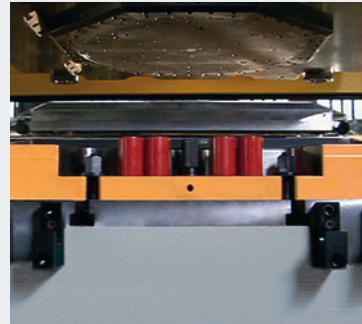
COIL LINES



- Short space design

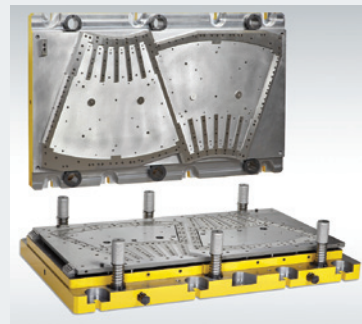
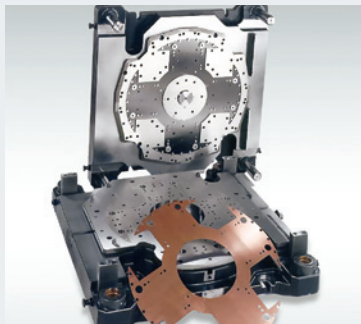
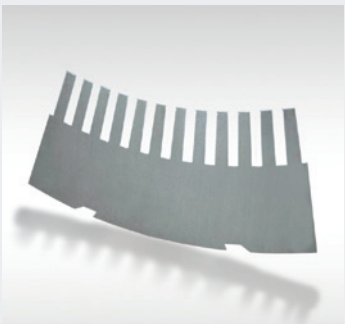


- Long space design



- Discharge shovel

COMPOUND DIES



- Dies for segments and rotors /stators

NOTCHING LINES

MANUALLY OPERATED



- Circular blanks 80 kN, 200 kN
- Circular blanks and segments 250 kN
- Segments 320 kN

AUTOMATED SOLUTIONS



- Rotary layout

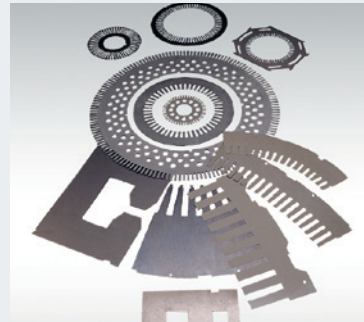
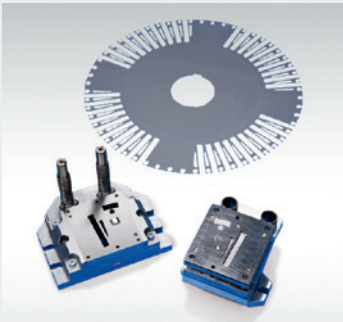
AUTOMATION OF EXISTING

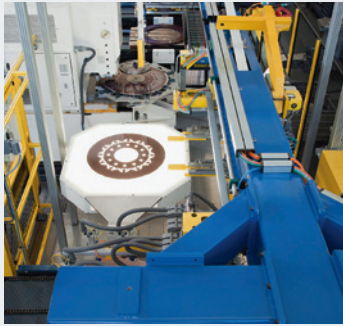
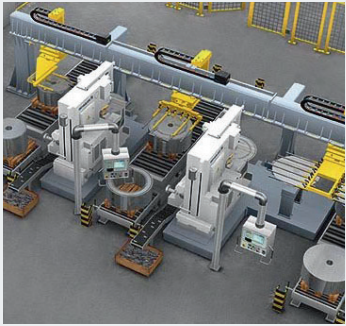
LINE AUTOMATION



- Rotary spider
- Linear layout

NOTCHING DIES



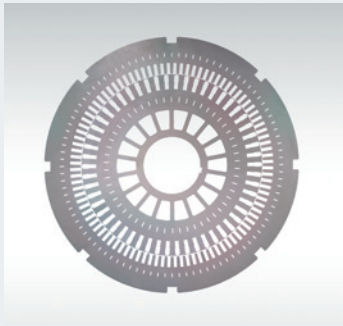


• Linear layout

EQUIPMENT



• Robots



SCHULER SERVICE. OPTIMUM SERVICE FOR MORE PERFORMANCE.



Schuler Service offers a tailored portfolio of services covering the entire life cycle of your equipment. Over 900 service employees worldwide provide expert support 24/7 in close cooperation with you – our partners.

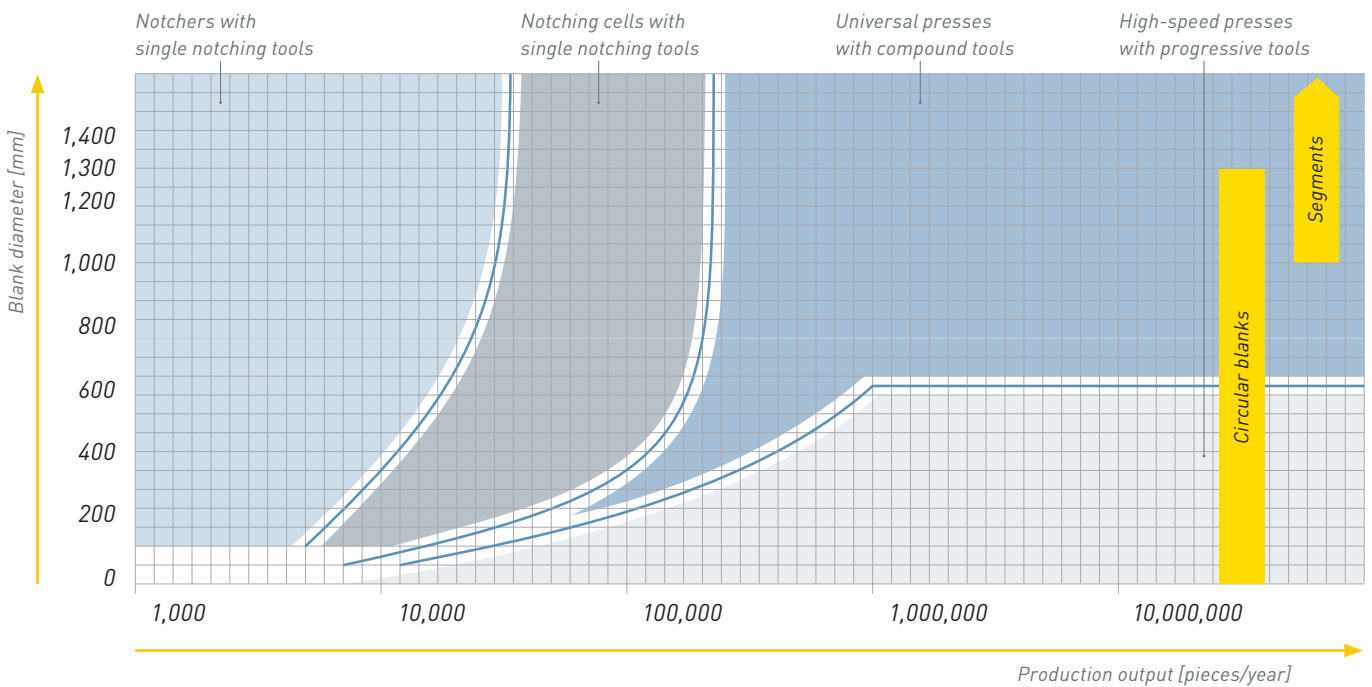
- EXPERTISE
- PARTNERSHIP
- PRODUCTIVITY
- SAFETY
- FUTURE

Find out more. Simply scan the QR code with the camera of your smartphone or tablet.

www.schulergroup.com/service



Technologies made by Schuler for the economic production of rotor and stator laminations. The manufacturing of electric motor laminations requires a variety of die and machine technologies, depending on diameter and production output. The diagram below shows the various application ranges for single notch, compound and progressive dies.





www.schulergroup.com/Drives_Generators

For more information, simply scan the QR code with the camera of your smartphone or tablet.

Schuler Pressen GmbH

Bahnhofstraße 41

73033 Göppingen | Germany

Phone +49 7161 66-0

Fax +49 716 166-233

Schuler Service Phone +49 7161 66-690

Schuler Service Fax +49 7161 66-626

info@schulergroup.com

www.schulergroup.com

Schuler Pressen GmbH

Weingarten plant

Schussenstraße 11

88250 Weingarten | Germany

Phone +49 751 401-01

Fax +49 751 401-2458