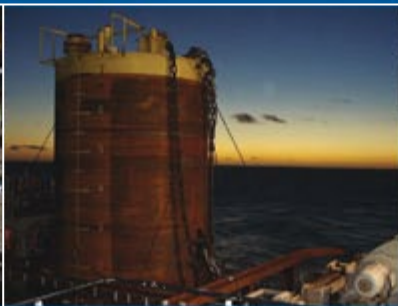




Forming the Future



Ideal partner for the Brazilian oil & gas and energy markets



Schuler is the South America market leader in machines and technology for metal forming and stamping. Having its headquarter in Germany, Schuler Brazil started its activities in Diadema - Sao Paulo, in 1965.

As part of its strategy in Brazil and based on its knowledge and experience in manufacturing, assembling and logistics of large equipments, Schuler is fully capable of working on special projects, providing products and services to general industry, especially for oil & gas and energy fields.

Total area:
103,220 m²
Built area:
32,727 m²



Engineering



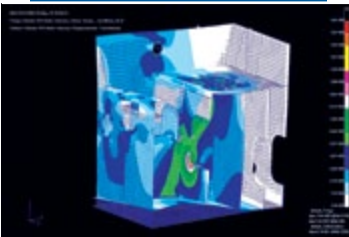
Welding



Machining



Assembly



Prensas Schuler S.A.

Av. Fagundes de Oliveira, 1515 | Vila São José
09950-904 - Diadema, SP
Tel. 11 4075 8444 | Fax 11 4079 2766
info@schuler.com.br | www.schuler.com.br



Schuler was recently awarded with CRCC from Petrobras, as well its management system is certified thru ISO-9001:2008, ISO-14001:2004 and OHSAS-18001:2007.