



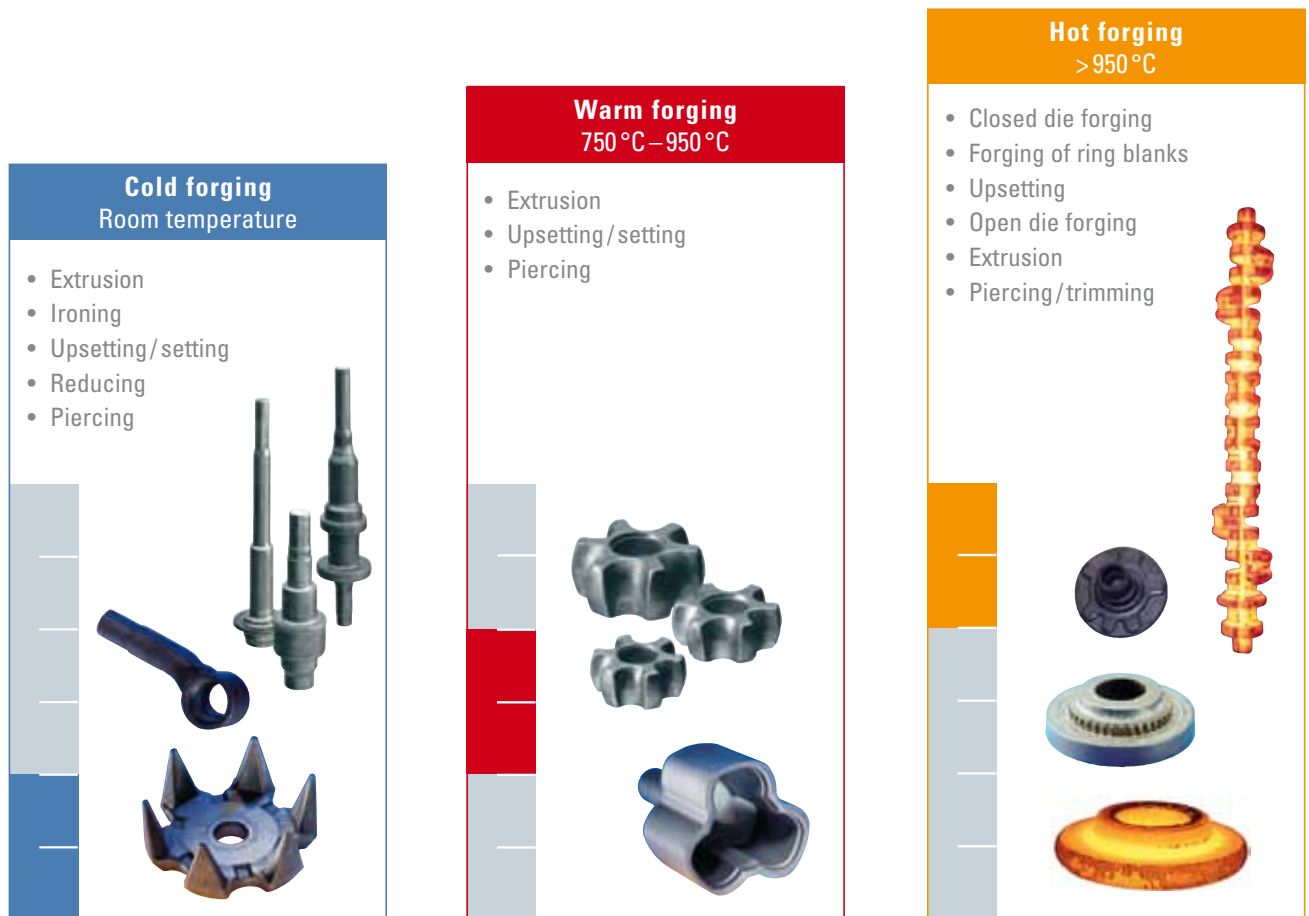
Put it into motion
Forging with Schuler



Forming the Future



As a systems supplier of economic production lines for forging, Schuler offers a comprehensive product range for cold-, warm- and hot forging as well as precision forging. From process and die development through start-up of the automated lines and dies, Schuler delivers integrated forging solutions for even the most complex requirements.



Systems for cold forging

HYDRAULIC COLD EXTRUSION PRESSES



MH-series, 3,150–40,000 kN

MULTI-STATION PRESSES WITH LINK DRIVE



MML-series, 3,150–31,500 kN / MSL-series with servo drive

HYDRAULIC IRONING PRESSES



MHS-series, 2 × 630–2 × 16,000 kN

HORIZONTAL MULTI-STATION PRESSES FOR FORGING OF WIRE



FM-series, 1,000–6,300 kN

SYSTEMS FOR MANUFACTURING CNG GAS CYLINDER TANKS



MH-series, 8,000, 12,000 and 19,000 kN

FROM A SINGLE SOURCE: PROCESS AND OPERATION DEVELOPMENT, DIES AND AUTOMATION SYSTEMS

In addition to forging systems and automation technology, Schuler also offers comprehensive process development including die solutions and die change systems from one source. To determine the best economic solution to produce quality parts, development of the forging process begins with part design, and must simultaneously consider material selection, process technology, production stages and die processes.

Systems for warm forging

MULTI-STATION PRESSES WITH ECCENTRIC DRIVE



MME-series, 3,150–31,500 kN / MSE-series with servo drive

MULTI-STATION PRESSES WITH LINK DRIVE



MML-series, 3,150–31,500 kN / MSL-series with servo drive

Systems for hot forging

SHORT-STROKE HAMMERS



KGH-series, 16–160 kJ

COUNTERBLOW HAMMERS



HG-series, 160–400 kJ / DG-series, 160–1,400 kJ

SCREW PRESSES



PA-, PAR-series, 3,200–26,000 kN / PSM-, PSH-series, 14,000–80,000 kN / PZS-series 100,000–360,000 kN

CRANK FORGING PRESSES



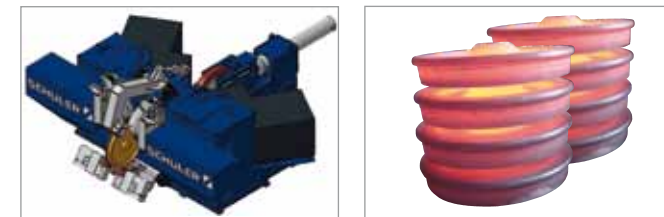
PK-series, 12,500–63,000 kN, optional with DualDrive

HYDRAULIC FORGING PRESSES



MH-series, 5,000–100,000 kN

WHEEL ROLLING MILLS FOR RAILWAY WHEELS



MHRV-180 / 80

MULTI-STATION PRESSES WITH ECCENTRIC DRIVE



MME-series, 3,150–31,500 kN / MSE-series with servo drive

HYDRAULIC PRESSES FOR FORGING RING BLANKS



MH-series, 8,000–140,000 kN

OPEN DIE FORGING SYSTEMS in cooperation with PAHNKE



MHFT-, MHFU-series, 8–100 MN

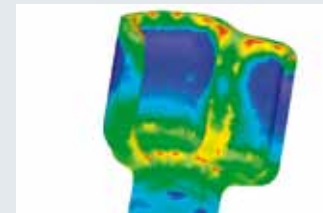
HYDRAULIC PRESSES FOR FORGING ALUMINUM WHEELS



MH-series, 5,000–100,000 kN

• **Process development**

• **Feed and transport path analysis**



• **Die solutions**

- Individual die solutions
- Integrated die lubrication and cooling systems
- Contact dies
- Closing units
- Trimming/cutting/shearing stations



• **Automation systems**

- Loading station
- Part transport
- Servo transfer
- Mono-beam transfer
- Mechanical transfer
- Gripper systems
- Part handling



• **Die change systems**

- Die set change
- Single station change
- Die change cart
- Custom solutions



More. Service from Schuler.

Technical service

- Maintenance and servicing
- Machine inspection
- Safety inspection
- Preventive maintenance
- Energy checks
- Teleservice
- Overhaul
- Machine relocation
- Machine installations

Performance enhancement

- Optimization
- Modernization
- Die and process technology

Training

- Schuler Academy
- Production start-up support

Used equipment



Service worldwide:

Germany • France • Great Britain • Italy •
Switzerland • Slovakia • Spain • Czech Republic •
Russia • USA • Mexico • Brazil • China • India



SCHULER PRESSEN GMBH

Bahnhofstr. 41 | 73033 Göppingen | Germany
Phone +49 7161 66-307 | Fax +49 7161 66-729

SCHULER PRESSEN GMBH Werk Weingarten

Schussenstr. 11 | 88250 Weingarten | Germany
Phone +49 751 401-2211 | Fax +49 751 401-952211

SCHULER SMG GMBH & CO. KG

Louis-Schuler-Str. 1 | 68753 Waghäusel | Germany
Phone +49 7254 988-226 | Fax +49 7254 988-490